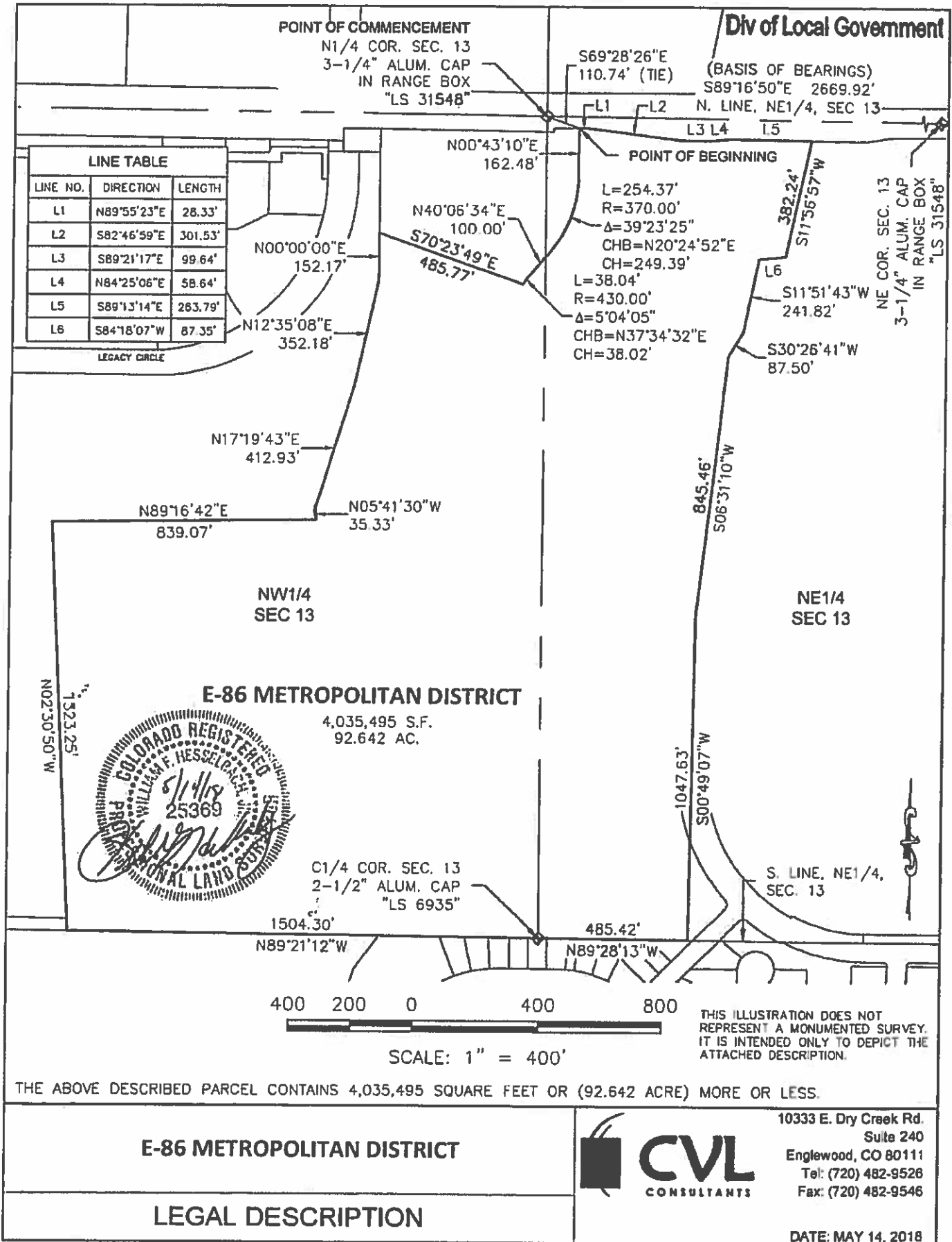


RECEIVED

JAN 02 2019



RECEIVED

JAN 02 2019

Div of Local Government

E-86 METROPOLITAN DISTRICT**LEGAL DESCRIPTION**

A PARCEL OF LAND LOCATED IN THE NORTH HALF OF SECTION 13, TOWNSHIP 8 SOUTH, RANGE 65 WEST OF THE SIXTH PRINCIPAL MERIDIAN, ELBERT COUNTY, COLORADO, BEING MORE PARTICULARLY DESCRIBED AS FOLLOWS:

BEGINNING AT THE NORTH QUARTER CORNER OF SAID SECTION 13 AND CONSIDERING THE NORTH LINE OF THE NORTHEAST QUARTER OF SAID SECTION 13 BEING MONUMENTED AS SHOWN HEREON, TO BEAR SOUTH 89°16'50" EAST, 2669.92 FEET, WITH ALL BEARINGS CONTAINED HEREIN BEING RELATIVE THERETO;

THENCE SOUTH 69°28'26" EAST, A DISTANCE OF 110.74 FEET TO A POINT ON THE SOUTHERLY RIGHT OF WAY LINE OF STATE HIGHWAY 86, SAID POINT BEING THE **POINT OF BEGINNING**;

THENCE ALONG SAID SOUTHERLY RIGHT OF WAY LINE THE FOLLOWING FIVE (5) COURSES:

1. THENCE NORTH 89°55'23" EAST, A DISTANCE OF 28.33 FEET;
2. THENCE SOUTH 82°46'59" EAST, A DISTANCE OF 301.53 FEET;
3. THENCE SOUTH 89°21'17" EAST, A DISTANCE OF 99.64 FEET;
4. THENCE NORTH 84°25'06" EAST, A DISTANCE OF 58.64 FEET;
5. THENCE SOUTH 89°13'14" EAST, A DISTANCE OF 263.79 FEET;

THENCE SOUTH 11°56'57" WEST, A DISTANCE OF 382.24 FEET;

THENCE SOUTH 84°18'07" WEST, A DISTANCE OF 87.35 FEET;

THENCE SOUTH 11°51'43" WEST, A DISTANCE OF 241.82 FEET;

THENCE SOUTH 30°26'41" WEST, A DISTANCE OF 87.50 FEET;

THENCE SOUTH 06°31'10" WEST, A DISTANCE OF 845.46 FEET;

THENCE SOUTH 00°49'07" WEST, A DISTANCE OF 1047.63 FEET TO A POINT ON THE SOUTH LINE OF THE NORTHEAST QUARTER OF SAID SECTION 13;

THENCE NORTH 89°28'13" WEST ALONG SAID SOUTH LINE, A DISTANCE OF 485.42 FEET TO A POINT BEING THE CENTER QUARTER CORNER OF SAID SECTION 13;

THENCE NORTH 89°21'12" WEST ALONG THE SOUTH LINE OF THE NORTHWEST QUARTER OF SAID SECTION 13, A DISTANCE OF 1504.03 FEET;

THENCE NORTH 02°30'50" WEST, A DISTANCE OF 1323.25 FEET;

THENCE NORTH 89°16'42" EAST, A DISTANCE OF 839.07 FEET;

THENCE NORTH 05°41'30" WEST, A DISTANCE OF 35.33 FEET;

THENCE NORTH 17°19'43" EAST, A DISTANCE OF 412.93 FEET;

THENCE NORTH 12°35'08" EAST, A DISTANCE OF 352.18 FEET;

THENCE NORTH 00°00'00" EAST, A DISTANCE OF 152.17 FEET;

THENCE SOUTH 70°23'49" EAST, A DISTANCE OF 485.77 FEET TO A POINT OF NON-TANGENT CURVATURE;

THENCE ALONG THE ARC OF A CURVE TO THE RIGHT HAVING A RADIUS OF 430.00 FEET, A CENTRAL ANGLE OF 05°04'05", AN ARC LENGTH OF 38.04 FEET, THE CHORD OF WHICH BEARS NORTH 37°34'32" EAST, 38.02 FEET TO A POINT OF TANGENCY;

THENCE NORTH 40°06'34" EAST, A DISTANCE OF 100.00 FEET TO A POINT OF CURVATURE;


THENCE ALONG THE ARC OF A CURVE TO THE LEFT HAVING A RADIUS OF 370.00 FEET, A CENTRAL ANGLE OF 39°23'25", AN ARC LENGTH OF 254.37 FEET, THE CHORD OF WHICH BEARS NORTH 20°24'52" EAST, 249.39 FEET;

THENCE NORTH 00°43'10" EAST, A DISTANCE OF 162.48 FEET TO THE POINT OF BEGINNING,

SAID METROPOLITAN DISTRICT CONTAINING A CALCULATED AREA OF 4,035,495 SQUARE FEET OR 92.642 ACRES, MORE OR LESS.

THE LINEAL UNIT USED IN THE PREPARATION OF THIS LEGAL DESCRIPTION IS THE U.S. SURVEY FOOT AS DEFINED BY THE UNITED STATES DEPARTMENT OF COMMERCE, NATIONAL INSTITUTE OF STANDARDS AND TECHNOLOGY.

I, WILLIAM F. HESSELBACH JR., A SURVEYOR LICENSED IN THE STATE OF COLORADO, DO HEREBY CERTIFY THAT THE ABOVE LEGAL DESCRIPTION AND ATTACHED EXHIBIT WERE PREPARED BY ME OR UNDER MY DIRECT SUPERVISION AND CHECKING.


WILLIAM F. HESSELBACH JR., P.L.S. 25369
FOR AND ON BEHALF OF
CVL CONSULTANTS OF COLORADO, INC.
10333 E. DRY CREEK ROAD, SUITE 240
ENGLEWOOD, CO 80112

